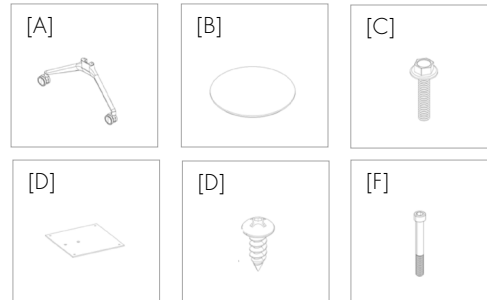


## FLIRT M.A.T.E. ASSEMBLY INSTRUCTIONS FOR MODELS #6990-395571 & #6990-486371

Components:

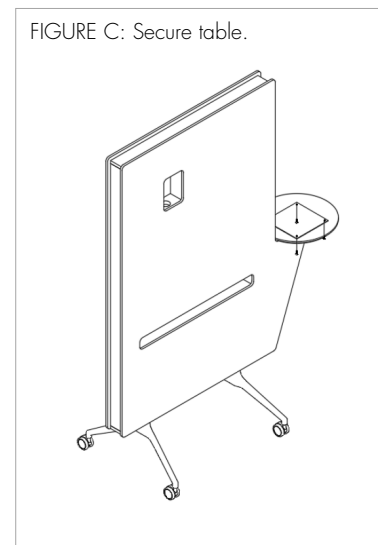
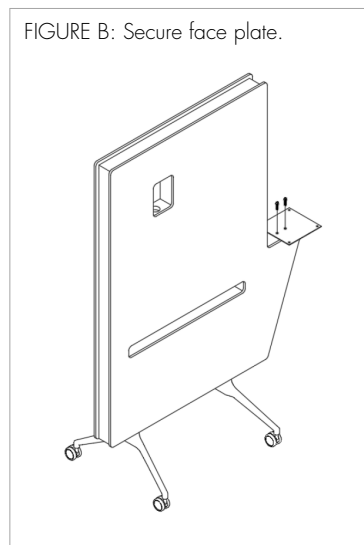
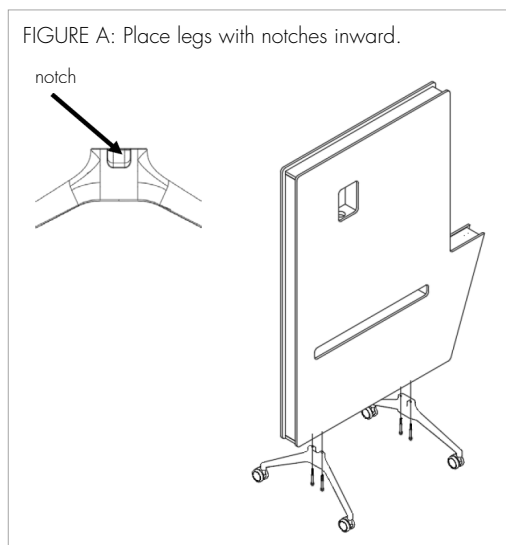
- [A] Legs (2)
- [B] Valet table (1)
- [C] 1/4"-20 x 1 1/4" bolt (2)
- [D] Flat plate (1)
- [E] 3/4" wood screw (4)
- [F] 5/16"-18 x 3" socket screw (4)



Step 1: Locate four holes on the bottom of the unit. Place legs and insert socket screws [F] to secure bases. Make sure notches face inward (Figure A).

Step 2: Locate two holes on the lip of the unit. Position faceplate [D] and affix with 1/4"-20 x 1 1/4" bolts [C] to secure in place (Figure B).

Step 3: Place valet table [B] on the plate. Locate four holes on the bottom of the table, and use 3/4" wood screws [E] to secure the table (Figure C).



If you require additional assistance, please contact Arcadia Client Services at 800.585.5957.